

## The Menalto II

**Plan ID:** B401

**The Basics:** 2188 Square feet | 4 Bedrooms  
| 3 Bath | 1 Garage stalls | 2 Levels

### Features:

- Dramatic contemporary design within modest footprint
- Warm, organic minimalism: Wood & other natural materials used within cutting-edge aesthetic
- Relaxed indoor/outdoor flow, upstairs and down, daylighted throughout
- Corner bay windows: Unique corner cantilever for window seats, with skylight above
- Clerestory corner windows above kitchen, and small windows b/w upper and lower kitchen cabinets
- Skylit stair tower
- Two master suites
- Master suite wraparound balcony, with stair access to backyard
- Ideal for suburban lots with restrictive height and daylight plane regulations



### Specs:

**Total living area:** 2188 sq. ft.

**First floor:** 1446 sq. ft.

**Second Floor:** 742 sq. ft.

### Unconditioned area:

**Garage stalls:** 1 (366 sq. ft.)

**Covered front porch:** 75 sq. ft.

**Back patio:** 307 sq. ft.

### Number of Rooms:

**Bedrooms:** 4

**Full Baths:** 3

**Half Baths:** 0

### Number of Stories:

### Dimensions:

**Width:** 44'-0"

**Depth:** 63'-9"

**Height:** 25'-6"

**Ceiling heights:** Various: 9' flat ceilings and vaulted

### Roof:

**Pitch (main):** 1.5:12 & 2:12

**Framing:** Stick

**Type:** Double lock standing seam roof with a 2" vertical seam height

### Exterior Wall Construction:

### Exterior Materials:

- Smooth-finish 3-coat stucco w/ smooth or sand float finish
- Tongue-in-groove clear cedar siding, stained prior to installation
- Cable rail
- Copper fascia at eaves
- Metal windows



# MADSON DESIGN

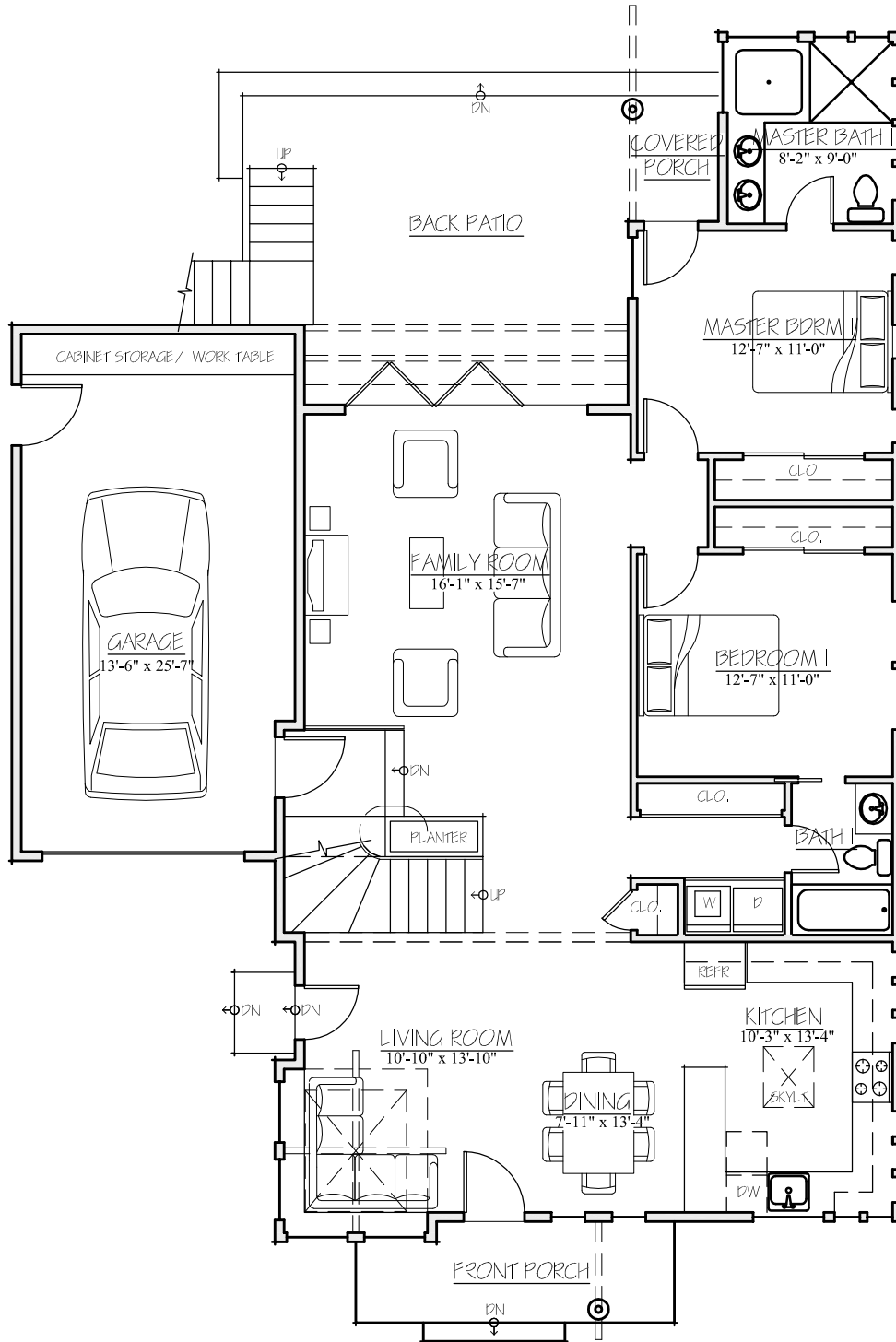
REMODELS - ADDITIONS - NEW HOMES

James N. Madson

[www.madsondesign.com](http://www.madsondesign.com)

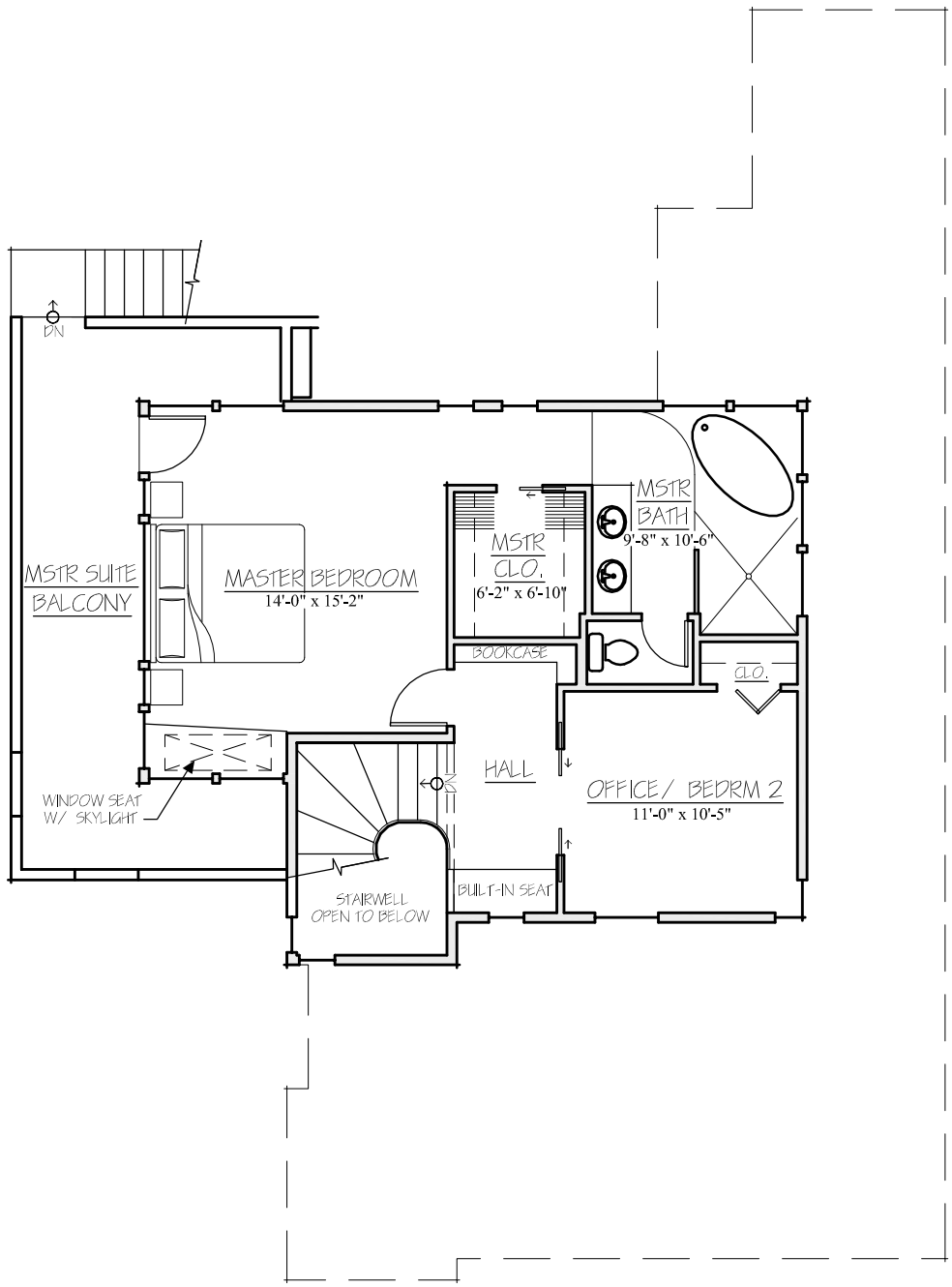
Email: [james@madsondesign.com](mailto:james@madsondesign.com)

Office: 415-334-2291 \* Cell: 916-996-3922



**B401: First level Floorplan**

© Madson Design



**B401: First level Floorplan**